



Shin Hwa M-Tech Co.,Ltd.

COMPANY INFORMATION

Shin Hwa M-Tech has been production the product in Korea since January 2011.

Address 45, Cheoyongsaneop 3-gil, Cheongnyang-eup, Ulju-gun, Ulsan, Korea Tel. +82-52-238-9540 <http://www.shmt.co.kr>



Contents

We, as a company with human respect and safety as priorities, are committed to become the best partner.

Contents

Shin Hwa M-Tech

- 01 Company Introduction
- 02 Company History
- 03 Organization
- 04 Main Fabrication Shop
- 05 Design & Available Materials
- 06 Certificates
- 07 Major Products
- 08 Experience
- 09 Location



Company Introduction

We, as a company with human respect and safety as priorities, are committed to become the best partner.

Company Introduction

Shin Hwa M-Tech

Established in 2011, SHMT has grown to become one of the most recognized and respected companies in the design, fabrication and supply of static and modular equipment worldwide.

The success of SHMT is based on its strong commitment to quality and reliability of its products through the project experience from the international clients all over the world.

This commitment is adhered to by each and every one of its employees, with the objective of assuring the confidence and satisfaction of our clients.

SHMT is one of the leading suppliers and manufacturers for the equipments, such as shell & tube heat exchanger, PSA Absorber, Pressure vessel, Column, Tower, Process Module, Piping spool, Air fin cooler, etc.

We are proud of being in the leading position not only in the company's commitment to each project in terms of quality and delivery, to its human resources and technical capacity, but also to the total commitment of the safety control on every process of the production.



Company History

We, as a company with human respect and safety as priorities, are committed to become the best partner.

Established “Bo Seong”

2011

Moved to new facilities

Moved to new Facilities in Ulsan.
Renamed as “Shin Hwa M-Tech Co.,Ltd”.
Acquired ASME “U”, “S” and “PP” Stamps.
Acquired ISO 9001 and OHSAS 18001 certificate.

Opened Factory 2

2014

2016

2018

Registered Expertise
Construction License

Registered machinery and equipment installation
business.

2019

Renewal of ASME stamps.

Renewal of ASME “U” and “S” stamps.
Registered Korea High-Pressure Gas Safety.
(Specific equipment Manufacture)

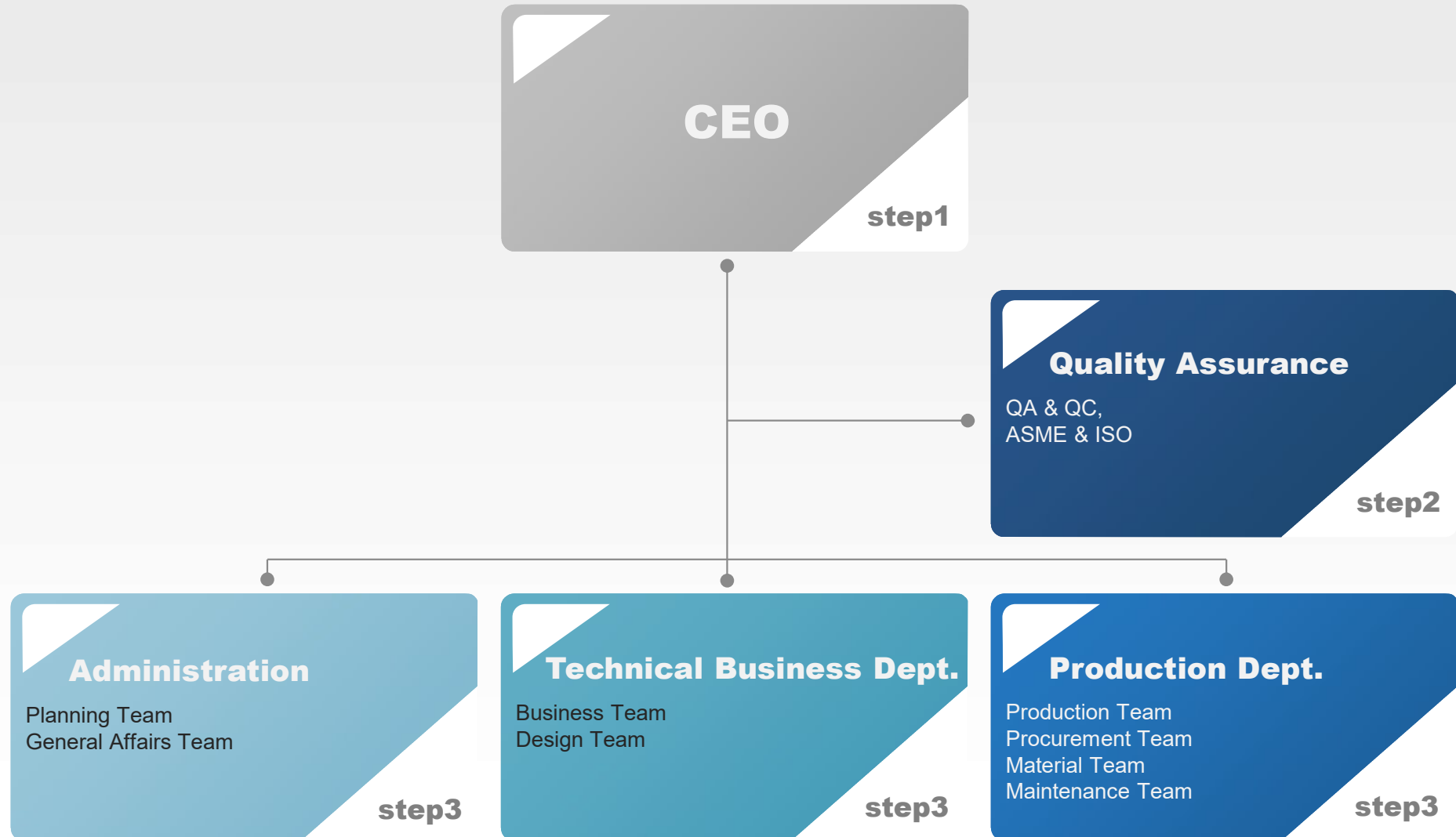
2021

Move headquarters factory by taking
over **Factory #1 (18,000m²)**



Organization

We, as a company with human respect and safety as priorities, are committed to become the best partner.





Main Fabrication Shop

We, as a company with human respect and safety as priorities, are committed to become the best partner.

Facilities

MAIN FABRICATION

FACTORY 1 - 18,000 m²

CRANE

Capacity (Number of Unit)

SHOP "A" :

>> Overhead Crane 10 Tons (2)

>> Overhead Crane 20 Tons (4)

SHOP "B"

>> Overhead Crane 10 Tons (2)

>> Overhead Crane 20 Tons (4)

SHOP "C"

>> Overhead Crane 10 Tons (4)

>> Overhead Crane 50 Tons (2)

Yard

>> Gantry Crane 20 Tons (4)

MAIN SHOP

Capacity (W x H x L / m)

>> SHOP "A" : 25 x 12 x 145

>> SHOP "B" : 25 x 12 x 116

>> SHOP "C" : 25 x 12 x 86

>> Yard : 20 x - x 60

RT ROOM

Capacity (W x H x L / m)

>> 6 x 7 x 19

* Shop Layout : (Indoor – 8,916 m²) (Outdoor – 9,084 m²)



RT Room

Shop "C"

Head Office

Shop "B"

Shop "A"

Yard



Main Fabrication Shop

We, as a company with human respect and safety as priorities, are committed to become the best partner.

* Shop Layout : (Indoor – 1,200 m²) (Outdoor – 12,523 m²)

Facilities

MAIN FABRICATION

FACTORY 2 -13,723 m²

CRANE

Capacity (Number of Unit)

- >> Gantry Crane 20 Tons (3)
- >> Gantry Crane 100 Tons (1)

MOVING SHELTER

Capacity (W x H x L / m)

- >> 30 x 20 x 40 (3)

PAINT SHOP (Sub con.)

Capacity (W x H x L / m)

- >> Paint Shop : 15 x 12 x 40
- >> Shot blasting Shop : 15 x 12 x 40

MACHINERY SHOP (Sub con.)

Capacity (Number of Unit)

- >> CNC BTA Drilling M/C 7m x 3m (2)
- >> CNC BTA Drilling M/C 3m x 3m (2)
- >> CNC Drilling M/C 5.5m x 5.5m (4)



Changed Yard
at Dec. 2016

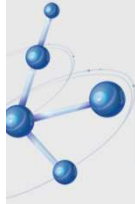
Paint Shop
(Sub con.)

Machinery Shop
(Sub con.)

Moving
Shelter "A"

Moving
Shelter "B"

Moving
Shelter "C"



Design & Available Materials

We, as a company with human respect and safety as priorities, are committed to become the best partner.

DESIGN &

AVAILABLE MATERIALS

Design

SHMT's trained engineers, using the latest computer design tools with complete understanding of the fundamental equipment design.

We translate customers' proposal into a design that meets all the latest ASME, TEMA and PED standards.

Software

>> Compress :

Mechanical design for pressure vessels & heat exchanger

>> NISA : Fatigue and stress analysis by FEM

>> Auto CAD : Drafting for detail drawing

>> PV Elite :

Mechanical design for pressure vessels & heat exchanger

>> HTRI : Thermal design of heat exchanger (Sub con.)

Available Materials

Ferrous

>> Carbon Steel :

Killed Carbon Steel, HIC (Hydrogen Induced Cracking)

>> Low-Alloy :

Cr-Mo (1.25Cr-0.5Mo, 2.25Cr-1Mo(V), 5Cr-1Mo), Nickel (3.5%)

>> Stainless Steel & Duplex :

Austenite, Martensite, Ferrite, Duplex, Super Duplex

Non-Ferrous

>> Nickel Alloy : Inconel

>> Copper Alloy :

Cu-Ni(70:30, 90:10), Aluminum Bronze, Aluminum Brass

>> Titanium

Clad-Material

>> SS-Clad, Ti-Clad

Certificates

We, as a company with human respect and safety as priorities, are committed to become the best partner.

Certificates

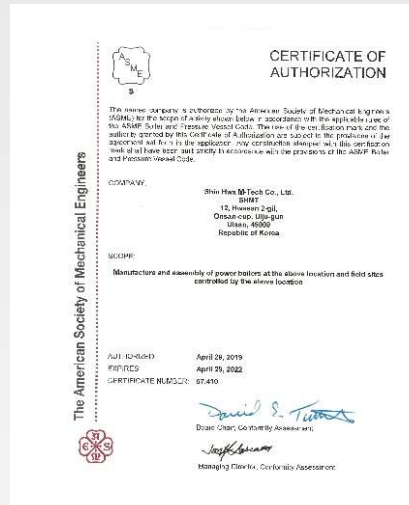
INTERNATIONAL

CERTIFICATES

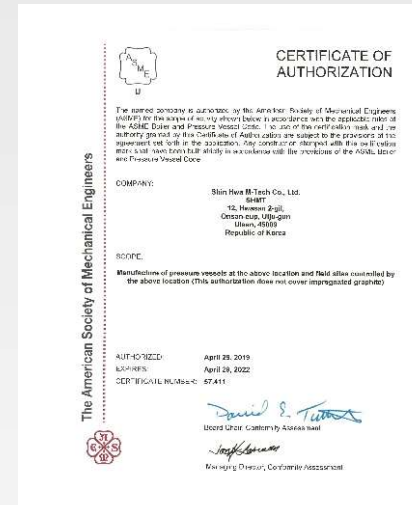
ASME

Name

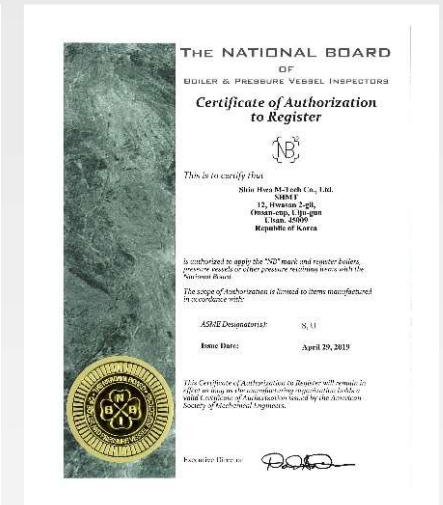
- >> ASME "S" (57,410)
- >> ASME "U" (57,411)
- >> NATIONAL BOARD (NB R)



ASME "S"



ASME "U"



NB R

ISO

Name

- >> ISO 9001 : 2015
- >> ISO 45001:2018



ISO 9001



ISO 45001

Certificates

We, as a company with human respect and safety as priorities, are committed to become the best partner.

Certificates

LOCAL REGULATION

CERTIFICATES

H.P.G.S

Name

>> High-Pressure Gas Safety Control

KOREA

Name

>> Registration of Expertise Construction Business

제 2021-3730186-16-5-00004 호
(Certificate No.)

특정설비 제조 등록증명서
Certificate of Manufacture Registration of Cylinder(Refrigerator & Specific Equipment)

사업의 종류(Business Type)	특정설비 제조		
상호(Company Name)	주신화영택		
사업소 소재지 (Office Address)	울산광역시 울주군 청량읍 차용산업3길 45		
대표자 성명	오봉철	생년월일 (The date of birth)	1966.01.25.
용기·냉동기·특정설비 (Cylinder, Refrigerator, Specified Equipment)	종류(Type)	규격(Standard)	
	압력용기 저장탱크	열교환기, 드럼, 반응기, 탱크, 기타 원동형	

「고압가스 안전관리법」 제5조제1항, 제5조제2항제1항·제2항 및 같은 법 시행규칙 제6조제1항제3호에 따라 용기(냉동기·특정설비)의 제조등록 또는 재등록을 마쳤으므로 용기(냉동기·특정설비)제조 등록증명서를 발급합니다.
[This certificate is granted for completing the manufacture registration under Article 5(1), Article 5-2(1) or (2) of the High-Pressure Gas Safety Control Act and Article 6(1)(3) of the Enforcement Rule there of]

2021년 11월 30일
(Year) (Month) (Date)

울산광역시 울주군수

High-Pressure Gas Safety Control

[별지 제3호 서식] (양식)

건설업등록증

- 업종 : 기계설비공사업
- 등록번호 : 울산울주2018-10-76
- 상호 : (주)신화영택
- 대표자 : 오봉철
- 주된 영업소 소재지 : 울산광역시 울주군 온산읍 차산2길 12
- 법인등록번호(생년월일) : 200111-0210030
- 국적(소속 국가명) : 대한민국
- 등록일자 : 2018.12.11

위 자는 건설산업기본법 제3조의 규정에 의하 건설업자임을 증명합니다.

2018년 12월 11일

울산광역시 울주군수

Registration of Expertise Construction Business

Major Products

We, as a company with human respect and safety as priorities, are committed to become the best partner.

Major Products

SHELL & TUBE

HEAT EXCHANGER



- >> **Project** : Crude Flexibility project (SR Unit) / UAE
- >> **Client** : ADNOC / Samsung Engineering (Hanyang Industry)
- >> **Material** : SA516-65N / SA192
- >> **Size(mm)** : 3,277(ID) x 11,400(L)
- >> **Total Weight(ton)** : 320

S & T Heat Exchanger Fabrication Capacity

Maximum Weight **300** ton/unit

Maximum Pressure **150** kg/cm²

Maximum Size(ID x L) **5 m x 30 m**



- >> **Project** : Takreer Carbon Black & Delayed Coker Project / UAE
- >> **Client** : TAKREER / Samsung Engineering
- >> **Material** : SA240-316L / SA213-316L
- >> **Size(mm)** : 690(ID) x 5,423(L) / V-Bayonet Type
- >> **Total Weight(ton)** : 6.7

Major Products

We, as a company with human respect and safety as priorities, are committed to become the best partner.

Major Products

REACTOR

Pressure
Vessel

Fabrication
Capacity

Maximum
Weight **300 ton/unit**

Maximum
Pressure **150 kg/cm²**

Maximum
Size(ID x L) **6 m x 60 m**



- >> **Project** : Tier -2
- >> **Client** : CITGO Petroleum
- >> **Material** : SA387-22 CL.2 + 347SS Clad
- >> **Size(mm)** : 4,572(ID) x 6,147(L)
- >> **Total Weight(ton)** : 87



- >> **Project** : Yanbu Petrochemical Complex Project
- >> **Client** : YANSAB / E Tec E&C
- >> **Material** : SA516-70N
- >> **Size(mm)** : 3,600(ID) x 17,000(L)
- >> **Total Weight(ton)** : 125

Major Products

We, as a company with human respect and safety as priorities, are committed to become the best partner.

Major Products

TOWER



- >> **Project** : Jurong Aromatic Complex
- >> **Client** : Jurong Aromatics Corporation
- >> **Material** : SA516-70
- >> **Size(mm)** : 3,200(ID) x 35,000(L)
- >> **Total Weight(ton)** : 72

Tower & Column Fabrication Capacity

Maximum Weight **350** ton/unit

Maximum Pressure **150** kg/cm²

Maximum Size(ID x L) **6 m x 60 m**



- >> **Project** : Cilacap Blue Sky Project / Indonesia
- >> **Client** : UOP Honeywell
- >> **Material** : SA240-304H
- >> **Size(mm)** : 1,480(ID) x 16,100(L) / Regeneration Tower
- >> **Total Weight(ton)** : 14.6

Major Products

We, as a company with human respect and safety as priorities, are committed to become the best partner.

Major Products

MODULE

Module Fabrication Capacity

Maximum
Weight **1,000** ton/unit

Maximum
Pressure **150** kg/cm²

Maximum
Size(W x H x L) **24 m x 18 m x 60 m**



>> **Project** : GS Caltex No.3 HOU / Korea

>> **Client** : GS Caltex

>> **Material** : -

>> **Size(mm)** : 16,500(W) x 16,000(H) x 53,000(L)

>> **Total Weight(ton)** : 1,248

Major Products

We, as a company with human respect and safety as priorities, are committed to become the best partner.

Major Products

STACK

Stack
Fabrication
Capacity

Maximum
Weight

400 ton/unit

Maximum
Size(ID x L)

6 m x 100 m



>> **Project** : Stack Fabrication / Onsan

>> **Client** : Moorim P&P

>> **Material** : SA516-70 / SA240-304L

>> **Size(mm)** : 2,200(ID) x 80,000(L)

>> **Total Weight(ton)** : 86

Major Products

We, as a company with human respect and safety as priorities, are committed to become the best partner.

Major Products

SILO PRE-FABRICATION

SITE ERECTION

SILO
Fabrication
Capacity

Maximum
Size(ID x L)

8 m x 30 m



>> **Project** : TPA Unloading Package / Russia

>> **Client** : SIBUR / DYECO

>> **Material** : SA240-304

>> **Size(mm)** : 7,200(ID) x 18,700(L)

>> **Total Weight(ton)** : 60

Major Products

We, as a company with human respect and safety as priorities, are committed to become the best partner.

Major Products

INCINERATOR WHB PACKAGE

WITH STEAM DRUM



WHB
Fabrication
Capacity

Maximum
Size(W x H x L) **12m x 18m x 60 m**



- >> **Project** : Incinerator WHB Package / Russia
- >> **Client** : SIBUR TOBOLSK LLC / ZEECO / DDEC
- >> **Material** : SA516-70N / SA376 TP347H / SA 192
- >> **Size(mm)** : 3,830(W) x 13,420(H) x 13,650(L)
- >> **Total Weight(ton)** : 200

Major Products

We, as a company with human respect and safety as priorities, are committed to become the best partner.

Major Products

JACKETED STACK

FABRICATION & SITE ERECTION



>> **Project** : ClO2 Scrubber Stack / Korea

>> **Client** : MOORIM P&P Co., Ltd.

>> **Material** : SA516-70 / SA240-316L

>> **Size(mm)** : 6,000/4000(ID) x 80,000(L)

>> **Total Weight(ton)** : 362

STACK
Fabrication
Capacity

Maximum
Size(ID x L)

8 m x 100 m



Major Products

We, as a company with human respect and safety as priorities, are committed to become the best partner.

Major Products

MODULE

Module Fabrication Capacity

Maximum
Weight **1,500** ton/unit

Maximum
Pressure **150** kg/cm²

Maximum
Size(W x H x L) **24 m x 18 m x 90 m**



>> **Project** : PEMEX DOS BOCAS CCR 4,500PPH

>> **Client** : UOP LLC

>> **Material** : -

>> **Size(mm)** : 17,150(W) x 8,250(H) x 85,000(L)

>> **Total Weight(ton)** : 1,397



Experience - 1

We, as a company with human respect and safety as priorities, are committed to become the best partner.

Experience

Client	Project Name / Type	Material / Weight(Ton)	Remark
KNPC	Fourth Gas Train Project / Vessel	SA516-70 / 157 Ton	2011.05 ~ (*)
Chevron	Wasit Project / Column	SA516-70N + 410S CLAD / 760 Ton	2011.11 ~ (*)
Chevron	Wasit Project / Column	SA516-70N + 410S CLAD / 761 Ton	2011.11 ~ (*)
Kuwait Oil	KOC Project / Vessel	SA516-60N(HIC)+S5 / 150 Ton	2011.12 ~ (*)
Kuwait Oil	KOC Project / Vessel	SA516-60N+NO6625 CLAD / 116 Ton	2011.12 ~ (*)
CB&I Construction	Cartagena Refinery Expansion Project / Drum	SA516-70N / 14 Ton	2012. 01 ~ (*)
Shell Canada Energy	Shell Quest CCS Project / Absorber	SA516-70N+S5 347 CLAD / 184 Ton	2012. 02 ~ (*)
SK Innovation	H – Project / H/EX	SA516-70 / 69 Ton	2012. 04 ~ (*)
Yanbu Petrochemical Complex	Yanbu Export Refinery Project / H/EX	SA516-70 + 410S CLAD / 1,649 Ton	2012. 06 ~ (*)
Jurong Aromatics Corporation	Jurong Aromatic Complex Project / Tower	SA516-70 / 630 Ton	2012. 06 ~ (*)
Jurong Aromatics Corporation	Jurong Aromatic Complex Project / H/EX	SA516-70 / 33 Ton	2012. 10 ~ (*)

(*) Only Fabrication



Experience - 2

We, as a company with human respect and safety as priorities, are committed to become the best partner.

Experience

Client	Project Name / Type	Material / Weight(Ton)	Remark
Shell Canada Energy	Carmon Creek Project / Vessel	SA516-70N + 304L CLAD / 7 Ton	2012.11 ~ (*)
Shell Philippines	SPEX MP3 Project / Receiver	SA516-70N / 7 Ton	2013.01 ~ (*)
Shell US Gas & Power LCC	Geismar Mmls Project / Contactor	SA516-70N / 57 Ton	2013.02 ~ (*)
Shell US Gas & Power LCC	Geismar Mmls Project / Separator	SA516-70N / 18 Ton	2013.11 ~ (*)
Shell US Gas & Power LCC	Geismar Mmls Project / Separator	SA516-70N + 321 SS CLAD / 28 Ton	2013.11 ~ (*)
Shell US Gas & Power LCC	Geismar Mmls Project / Regenerator	SA240-304L / 31 Ton	2013.12 ~ (*)
Shell US Gas & Power LCC	Geismar Mmls Project / H/EX	SA516-70N / 8 Ton	2013.12 ~ (*)
Shell US Gas & Power LCC	Sarnia Mmls Project / H/EX	SA516-70N / 3 Ton	2013.12 ~ (*)
UOP LLC / ISC	NSRP Recovery Plus Project / Vessel	SA516-70N / 103 Ton	2014. 04 ~ (*)
UOP LLC / ISC	LR2 Refinery Project / Absorbers	SA516-70N / 104 Ton	2014. 04 ~ (*)
Chiyoda Philippines Corporation	Star Trec Project / Vessel	SA516-70N / 48 Ton	2014. 07 ~ (*)

(*) Only Fabrication



Experience - 3

We, as a company with human respect and safety as priorities, are committed to become the best partner.

Experience

Client	Project Name / Type	Material / Weight(Ton)	Remark
Chiyoda Philippines Corporation	Star Trec Project / Tower	SA516-70N / 41.5 Ton	2014.07 ~ (*)
Chiyoda Philippines Corporation	Star Trec Project / H/EX	SA516-60N / 13.6 Ton	2014.07 ~ (*)
Shell Canada Energy	Carmon Creek Project / H/EX	SA516-70N / 419 Ton	2014.07 ~ (*)
Foster Wheeler	BLNG Cogen II Project / Vessel	SA516-70N / 41 Ton	2014.09 ~ (*)
Jacobs Nederland	Aromatics Project / Tower	SA516-70N / 237 Ton	2014.10 ~ (*)
UOP, A Honeywell / ISC	Onerosa Separex Membrane Project / Module	SA572-50 / 1,160 Ton	2014.10 ~ (*)
JGC Corporation	SMAD Rejuvenation Project / Tower	SA516-70N + 304L / 34 Ton	2014.11 ~ (*)
Jacobs Nederland	Aromatics Project / H/EX	SA516-70N / 16 Ton	2014.12 ~ (*)
Shell Canada Energy	Carmon Creek Project / H/EX	SA516-70N / 90 Ton	2015. 02 ~ (*)
Shell Canada Energy	Carmon Creek Project / Vessel	SA516-70N / 102 Ton	2015. 02 ~ (*)
Jacobs	Shell-Scotford HCl Debottleneck / Tower	SA516-70N, SA516-70N+304L / 25Ton	2015. 05 ~ (*)

(*) Only Fabrication



Experience - 4

We, as a company with human respect and safety as priorities, are committed to become the best partner.

Experience

Client	Project Name / Type	Material / Weight(Ton)	Remark
Jacobs	Shell-Scotford HCl Debottleneck / Vessel	SA516-70N / 41 Ton	2015.05 ~ (*)
Jacobs	Shell-Scotford HCl Debottleneck / Vessel	SA516-70N (HIC) / 35 Ton	2015.05 ~ (*)
Jacobs	Shell-Scotford HCl Debottleneck / Vessel	SA516-70N / 24 Ton	2015.05 ~ (*)
Hyundai Chemical	MX Project / H/EX	SA516-60 / 301 Ton	2015.08 ~ (*)
Han Ju	Repair Work / Condenser	SS400 / 22 Ton	2015.08 ~ (*)
I.T.T Spa	Karbala Project / Crude Heater	SA36 / 252 Ton	2015.11 ~
KNPC / ISC	Clean Fuels Project (Kuwait) / Vessel	SA516-70 / 232 Ton	2015.12 ~ (*)
Jacobs	Kandym Project / Reactor	SA516-70 / 332 Ton	2016. 03 ~ (*)
UOP, A Honeywell	Cilacap Blue Sky Project (Indonesia) / Regeneration Tower & Etc.	SA240-304H / 27 Ton	2016. 07 ~
KNPC / ISC	Al-Zour Refinery Project (Kuwait) / Vessel	SA516-70N (HIC) / 365 Ton	2016. 11 ~ (*)
Motiva Enterprises LLC	Motiva Norco Tiler 3 Project / Vessel	SA516-70N / 113 Ton	2017. 08 ~ (*)

(*) Only Fabrication



Experience - 5

We, as a company with human respect and safety as priorities, are committed to become the best partner.

Experience

Client	Project Name / Type	Material / Weight(Ton)	Remark
UOP / ISC	YAISKIY CCR / Module	C/S / 700 Ton	2017.05 ~ (*)
Technip FMC	Jebel Ali Refinery Expansion / H/EX	SA516-70N (HIC) / 278 Ton	2017.11 ~ (*)
Sabir	Yanbu / Ethylene Glycol – 1 / Vessel	SA516-70N / 190 Ton	2018.03 ~ (*)
Hyundai Oil Bank / UOP / ISC	ORP CCR / Module	C/S / 450 Ton	2018.02 ~ (*)
Qatar Gas	Qatar Gas 2 / H/EX	SA516-60 / 445 Ton	2018.02 ~ (*)
SIBUR / DYECO	TPA Unloading Package / Silo, Hopper, Bag filter / Site Erection	A240-304 / 80 Ton	2018.02 ~
Moorim P&P	#1 Boiler Stack / Stack	A516-70, A240-304 / 120 Ton	2018.09 ~
Samsung Engineering / Hanyang Industry	ADNOC Refining Crude Flexibility / WHE & Incinerator	SA516-65N, SA192 / 320 Ton	2018.12 ~
Shell / ISGH	Surge Drum / Vessel	SA516-70N / 88 Ton	2019.02 ~ (*)
Worleyparson / ISGH	Pohokura Depletion / Vessel	SA516-70N + 316L / 21 Ton	2019.02 ~ (*)
Bapco TTSJV / ISGH	Bapco Modernization / H/EX	SA516-70 / 1,337 Ton	2019.02 ~ (*)

(*) Only Fabrication



Experience - 6

We, as a company with human respect and safety as priorities, are committed to become the best partner.

Experience

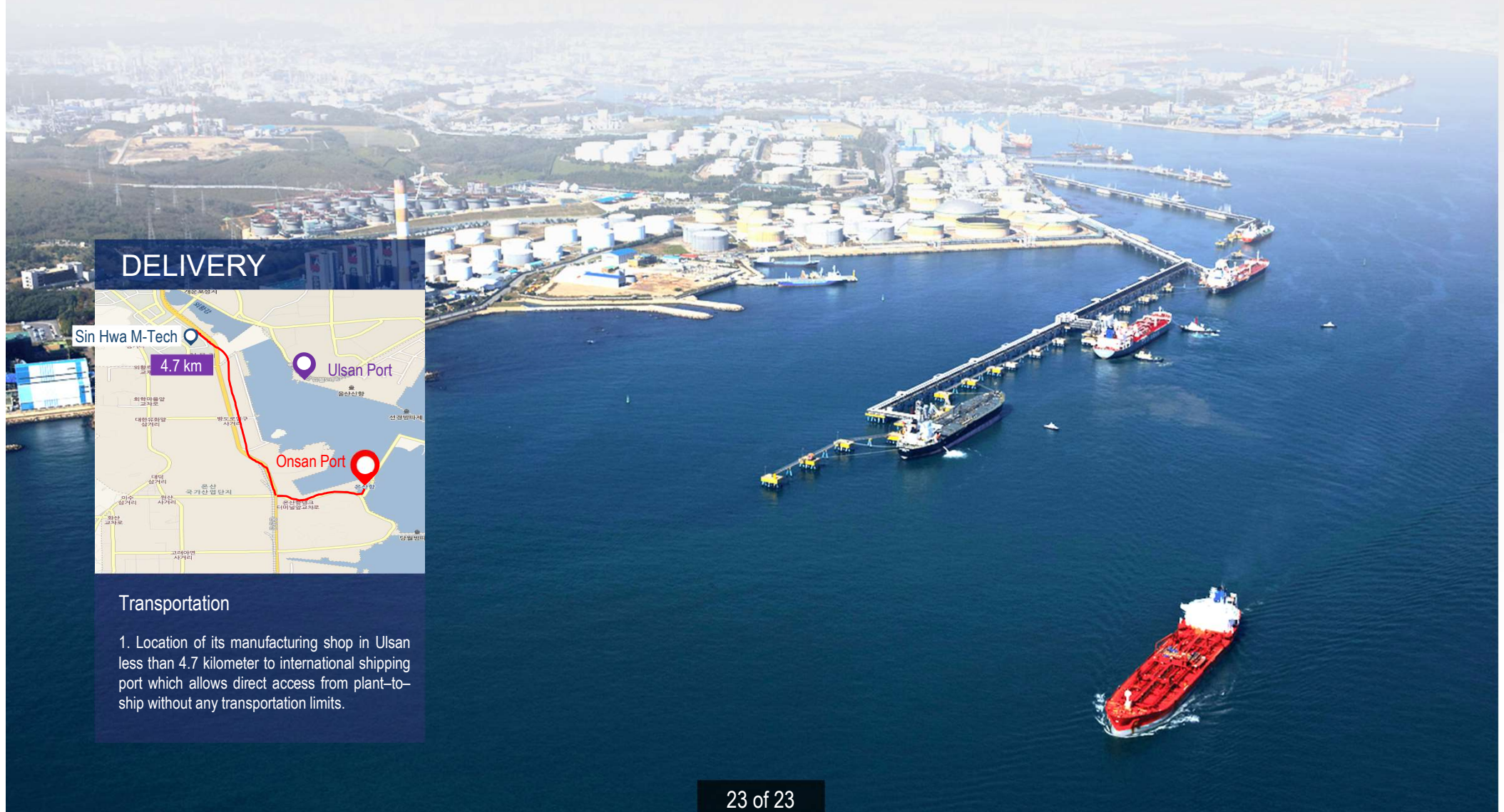
Client	Project Name / Type	Material / Weight(Ton)	Remark
Samsung Engineering	Takreer C.B.D.C / H/EX (Bayonet type)	SA240-316L / 15 Ton	2019.03 ~
SIBUR / ZEECO / DDERS	Incinerator WHB Package / Vessel & Boiler	SA516-70N / 210 Ton	2020.03 ~
Moorim P&P	Boiler Stack / Stack	SA516-70N / 362 Ton	2020.05 ~
Indorama	Feed conditioning Unit 2(FCU2) / HEX	SA240-304 / 11 Ton	2020.05 ~
UOP, A Honeywell	PEMEX CCR Project / Module	1397Ton	2020.12 ~
UOP, A Honeywell	SLAVYANSK CCR PROJECT/ Main equipment	S240-304,316H / 49 Ton	2021.01 ~
Samsung Engineering	Sarawak Methanol / H/EX	SA516-70,SA240-316L / 494 Ton	2021.04 ~

(*) Only Fabrication

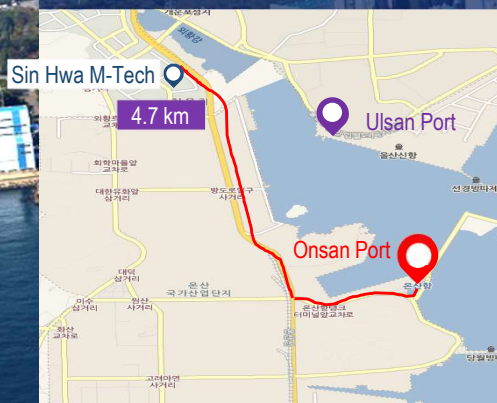
Location

We, as a company with human respect and safety as priorities, are committed to become the best partner.

Location : : 45, Cheoyongsaneop 3-gil, Cheongnyang-eup, Ulju-gun, Ulsan, Korea



DELIVERY



Transportation

1. Location of its manufacturing shop in Ulsan less than 4.7 kilometer to international shipping port which allows direct access from plant-to-ship without any transportation limits.